

## SkipTheDepot – Fundraising Guide



Thank you for choosing to support The Canadian Mental Health Association – Edmonton Region! Below is a step-by-step guide to donate your bottle refund through SkipTheDepot.

For more information on setting up a company or group bottle drive, please contact our Events & Engagements Coordinator, Katelyn Lomax, at [klomax@cmha-edmonton.ab.ca](mailto:klomax@cmha-edmonton.ab.ca)

### A Message from SkipTheDepot:

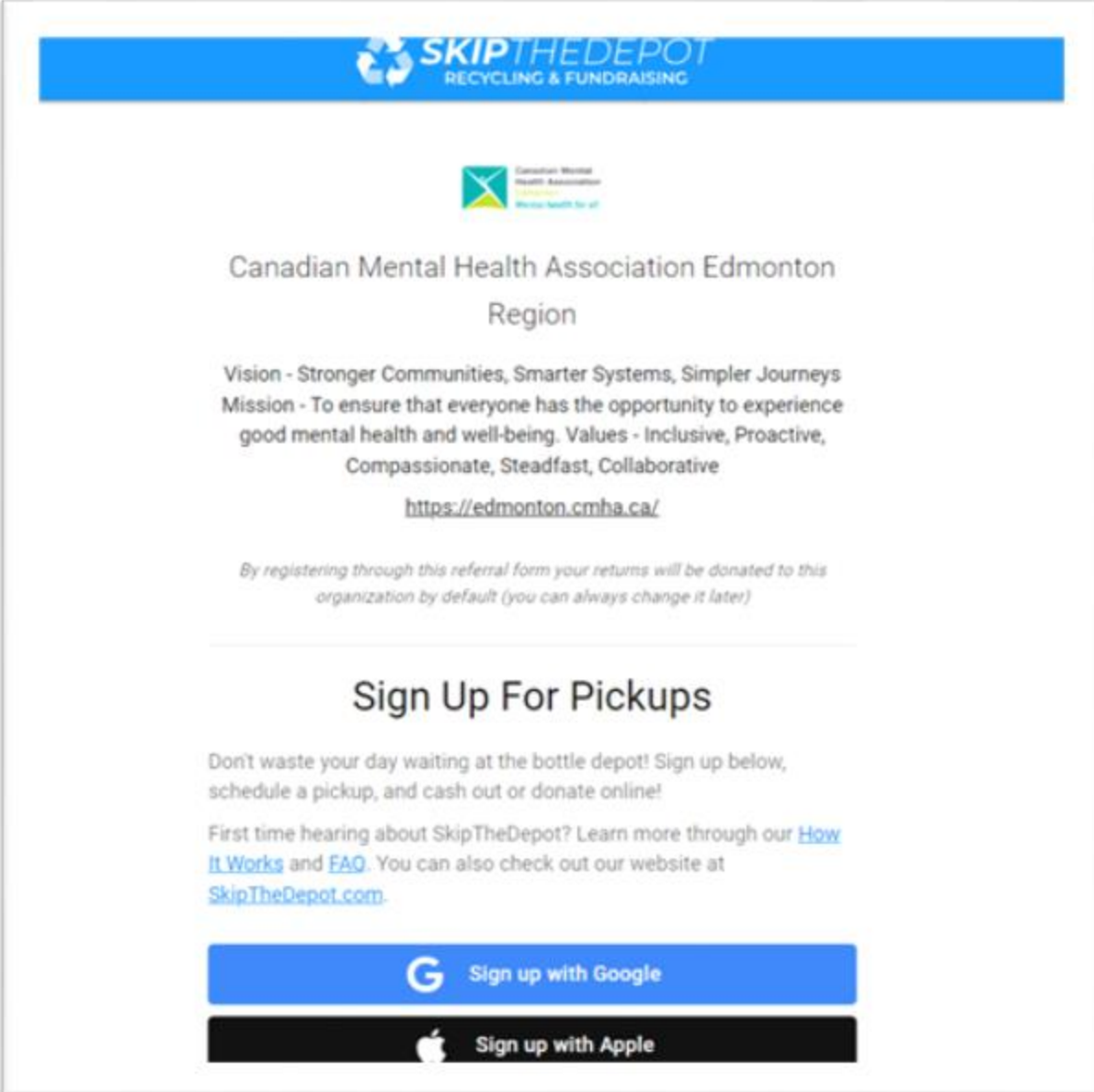
SkipTheDepot is a site which allows you to get your recycling picked up and processed without having to make a trip to the bottle depot. Residents of Edmonton can use SkipTheDepot to recycle their bottles and cans while still getting their returns, all for free.

Heading to the bottle depot can be messy and eat up a good chunk of your day. SkipTheDepot lets you ditch the dirty work while still getting money back! We handle the pick-up as well as the recycling while you get the return. It is an effortless process!

With SkipTheDepot you can donate to local charities and your community from within the site. To donate your next return all you need to do is select a donation preference during booking. After that, your next return will be donated to your charity of choice. You can even receive a tax receipt for your donation if the charity provides them.

## Steps To Donate Your Bottles Through SkipTheDepot:

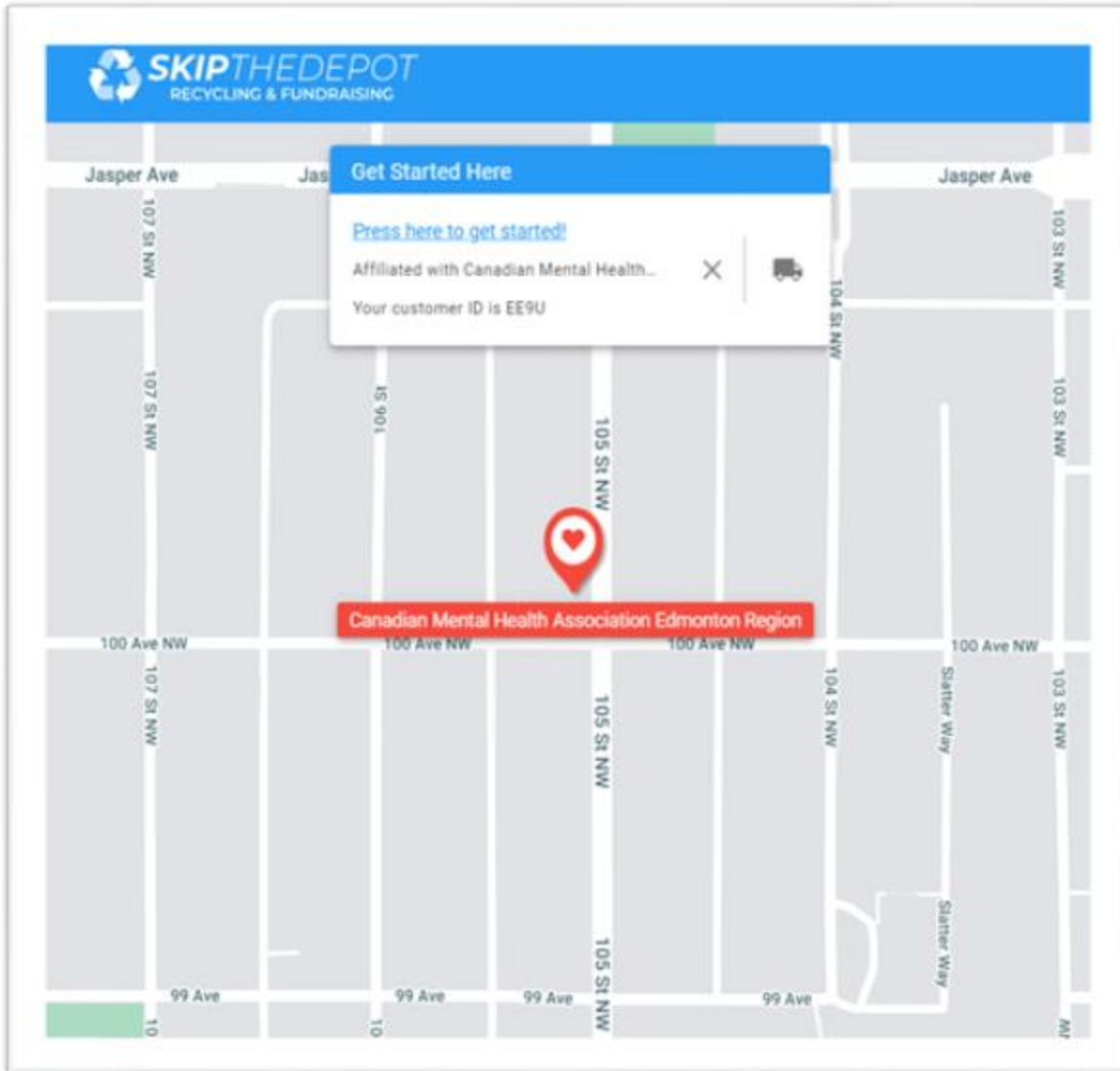
1. Use our Referral Link: <https://app.skipthedepot.com/cmhaer>



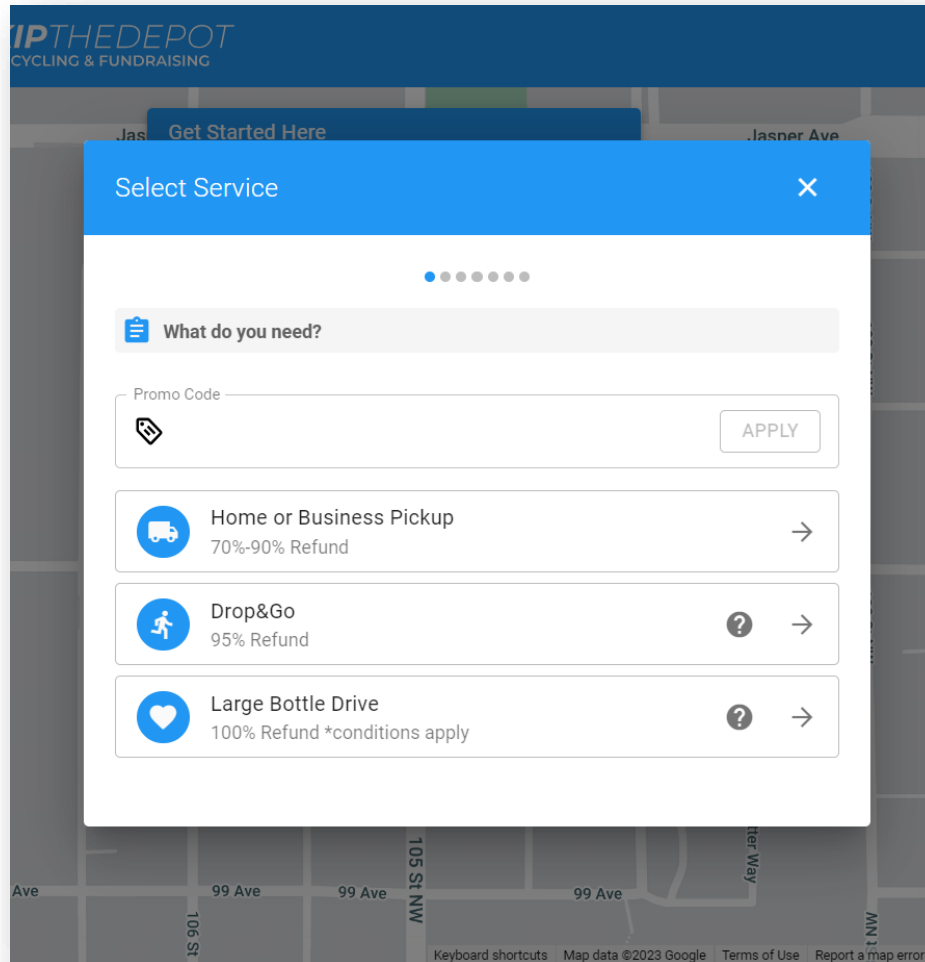
The screenshot shows a referral page for SkipTheDepot. At the top is a blue banner with the SkipTheDepot logo and the text "SKIP THE DEPOT RECYCLING & FUNDRAISING". Below this is the logo for the Canadian Mental Health Association (CMHA) with the tagline "Mental health for all". The text on the page identifies the organization as the "Canadian Mental Health Association Edmonton Region". It lists the vision as "Stronger Communities, Smarter Systems, Simpler Journeys" and the mission as "To ensure that everyone has the opportunity to experience good mental health and well-being". Values listed are "Inclusive, Proactive, Compassionate, Steadfast, Collaborative". A URL is provided: <https://edmonton.cmha.ca/>. A note states: "By registering through this referral form your returns will be donated to this organization by default (you can always change it later)". The main heading is "Sign Up For Pickups". Below this, it says "Don't waste your day waiting at the bottle depot! Sign up below, schedule a pickup, and cash out or donate online!". It also provides links for "How It Works" and "FAQ" and the website "SkipTheDepot.com". At the bottom are two buttons: "Sign up with Google" and "Sign up with Apple".

- From this page you can choose from [creating](#) an account or signing into a previously owned account.
- There is also an option to start a bottle drive, which will allow third party organizers to use SkipTheDepot to simply their fundraising efforts.

2. Once on the home page, select 'Press here to get started!'

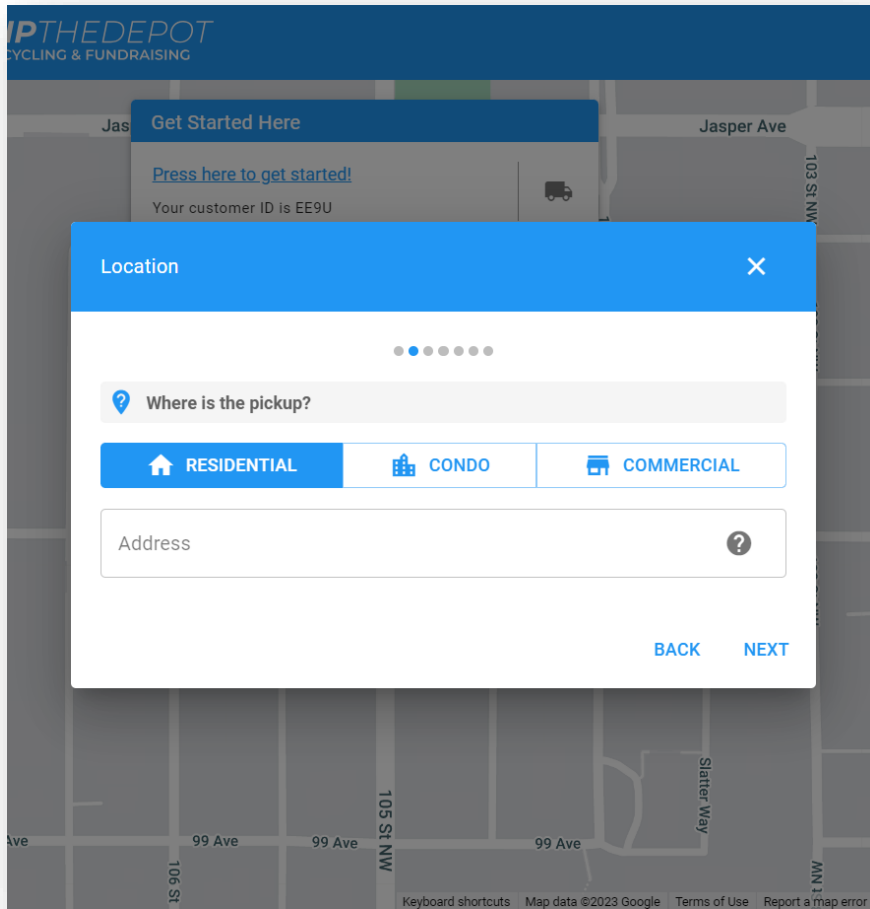


### 3. Section Selection

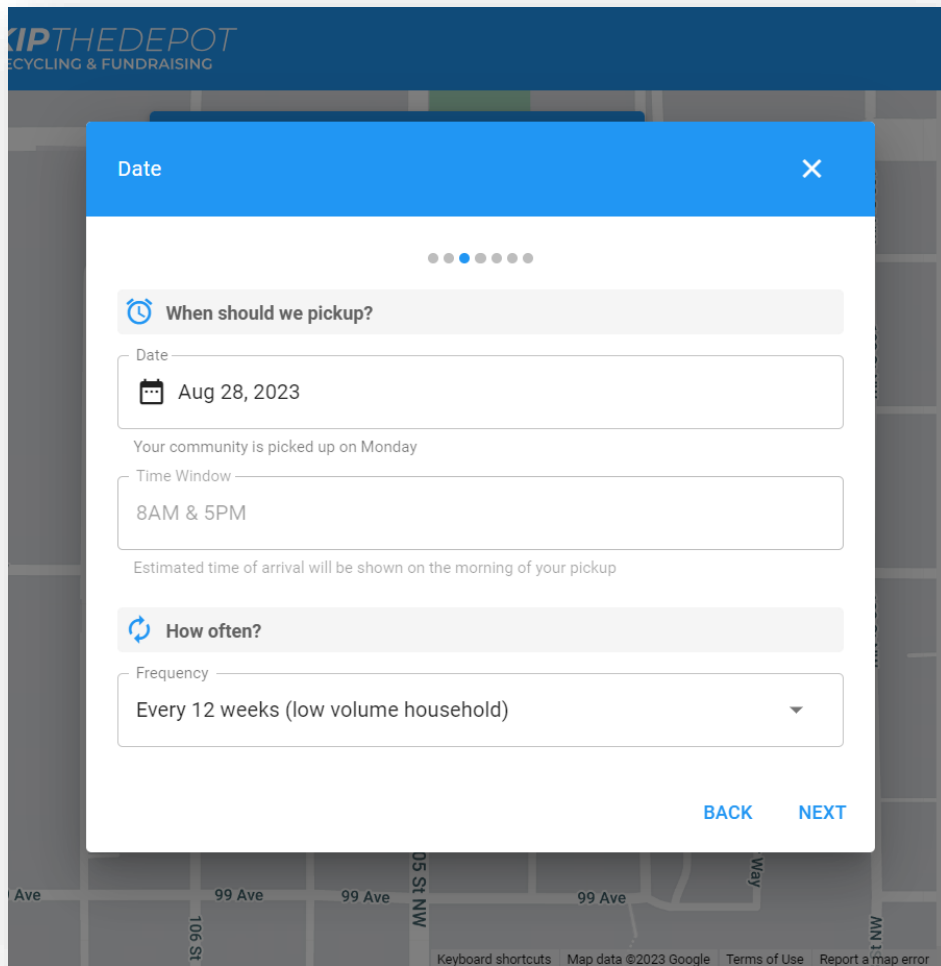


- Please choose which option from the menu is best suited for your fundraising initiative
- Options include:
  - Bottle pick up from an individual residence or from a business location
  - The ability to drop off the bottle donation yourself at one of the SkipTheDepot locations
  - Or a large bottle drive donation pickup from a home or business

#### 4. Section Selection – Home or Business Pickup



- Enter the address/location of the pickup location



- Enter the date and time window that you would like SkipTheDepot to pick up your bottles
- There is also an option to schedule reoccurring pickups if you so choose

PTHEDEPOT  
CYCLING & FUNDRAISING

Recyclables

How much are we picking up?

Bottle recycling (required)  
0 Bags

Garbage-sized bags. [Other options](#)

Clothing donation  
0 Bags

Garbage-sized bags.

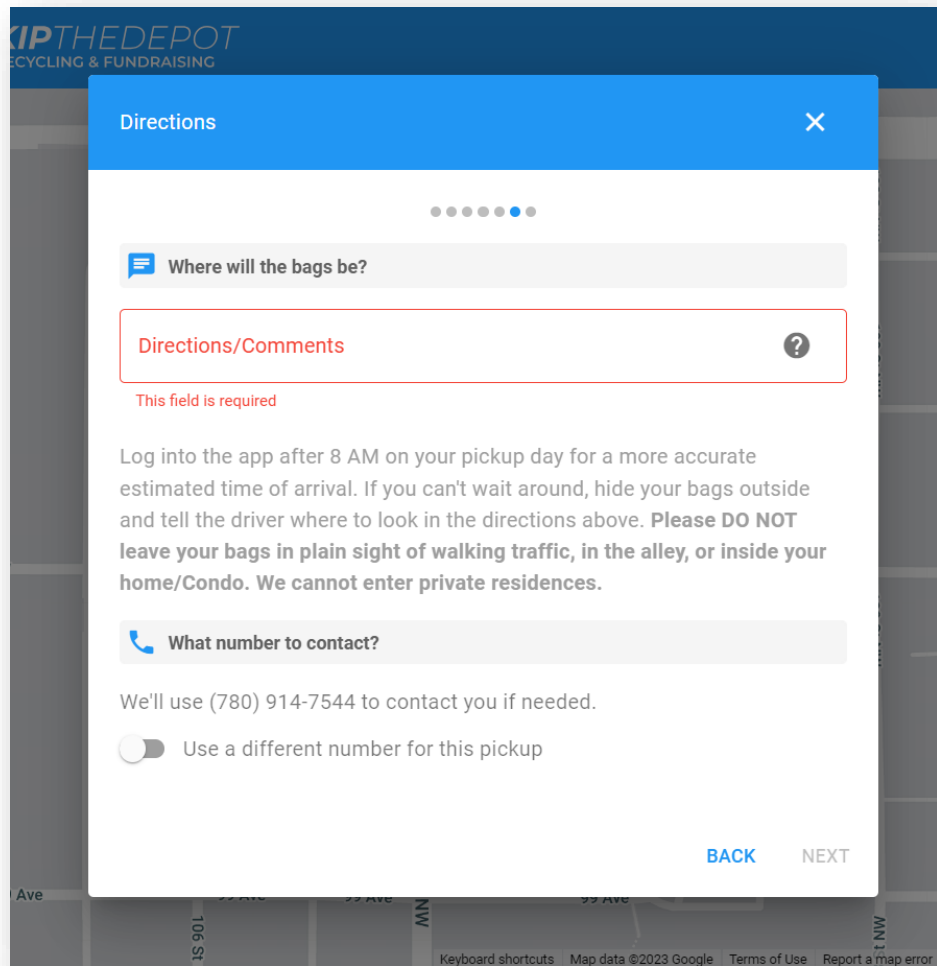
Electronics  
0 Items

Number of items.

Your ID is **EE9U**. Please write this on your bag(s) if you can.

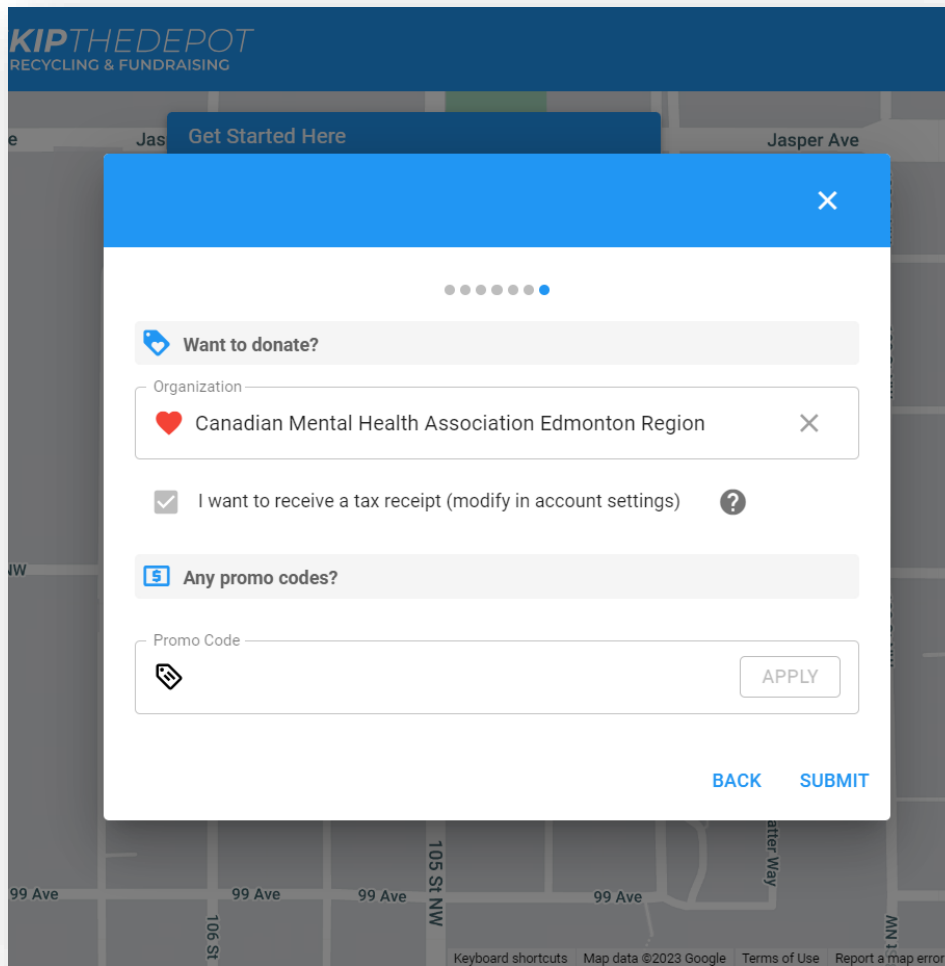
BACK NEXT

- Proceed to fill in the number of bags you are requesting to be picked up
- **Your ID** will show up on the bottom of the page. Please write this ID on each bag that is being picked up
- **Note** – CMHA-ER only accepts donations from bottle recycling



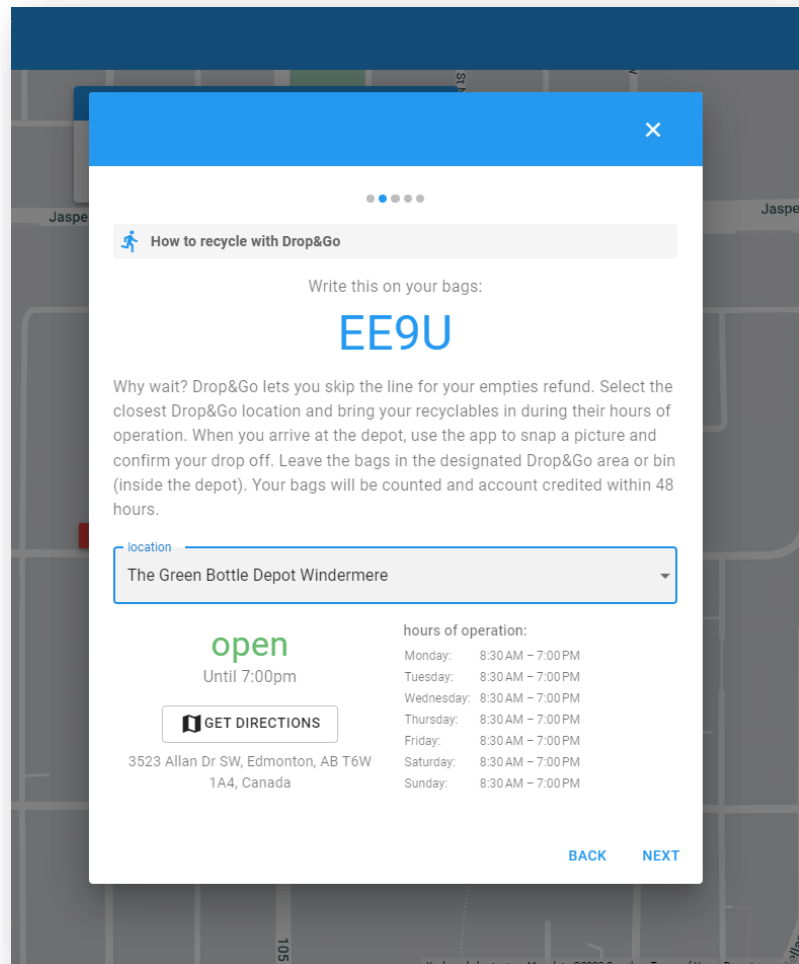
- The directions page allows you the opportunity to provide any additional comments regarding the location of your bags for the SkipTheDepot team.
- It is stated that logging onto the site after 8am on your pickup date will allow a more accurate time estimate of when your bags are being picked up.
- If you are unable to be present during the pickup, hide your bags outside and provide a comment as to where the bag(s) are located.
- **Please DO NOT leave your bags in plain sight of walking traffic, in the alley, or inside of your home.**





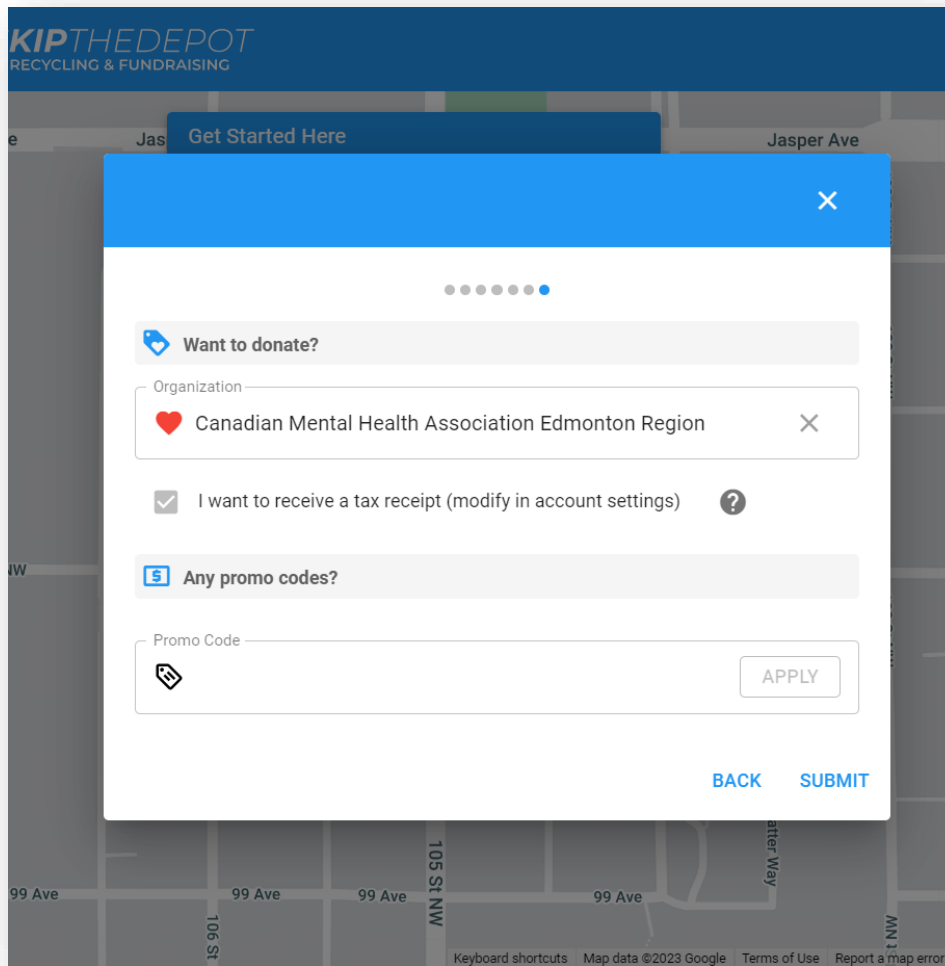
- In the organization search bar, type in and select, Canadian Mental Health Association Edmonton Region
- To ensure that CMHA-ER gets **100%** of the funds from your bottle donation, please reference the [CMHA-ER SkipTheDepot page](#) to find our **PROMO Code**.
- Once completed, submit the request and you are ready to go!

## 5. Section Selection – Drop & Go



- After selecting the Drop & Go option, click on the location drop down menu to choose from various SkipTheDepot drop locations
- Once a location is selected, you are provided with directions and its hours of operation
- The following page will prompt you to select the number of bags you are planning to drop off
- If the bottles you are donating are not in a bag, click other options, and the drop-down menu in the image above will appear
- **Your ID** will show up on the bottom of the page. Please write this ID on each bag that you are donating
- The menu provided on the next page (after clicking next) will ask you to take a photo of your bottle donation. This is for security purposes.
- After uploading the image, please place the bottle donation in the designated Drop & Go area or bin, which is located inside the depot





- In the organization search bar, type in and select, Canadian Mental Health Association Edmonton Region
- To ensure that CMHA-ER gets **100%** of the funds from your bottle donation, please reference the [CMHA-ER SkipTheDepot page](#) to find our **PROMO Code**.
- If you would like a tax receipt for your donation, please make sure to check off the box under the Organization drop down menu
- Once completed, press submit, and you are ready to go!

## 6. Section Selection – Large Bottle Drive

Get Started Here

Fill out the following information we will make sure you have access to a trailer or bottle pickup on the day of your Bottle Drive.

Date: Aug 24, 2023

Time:

Address: 10010 105 Street Northwest, Edmonton, AB, Canada

Directions/Comments

Organization / Charity

Name: Katelyn Lomax

E-mail: klomax@cmha-edmonton.ab.ca

Phone: (780) 914-7544

Referring Bottle Depot

Estimated number of bags

BACK SUBMIT

- To initiate a large bottle drive through SkipTheDepot you will need to fill out the information seen in the image above.
- From there SkipTheDepot will help you arrange a bottle pickup or delivery on the day of your bottle drive

## Frequently Asked Questions (FAQ):

### **1. How much of the proceeds does CMHA receive back?**

- **Home & Business Pickup:** 70-90%
- **Drop & Go:** 95%
- **Bottle Drive:** 100%

### **2. How does CMHA-ER provide tax receipts?**

- Those who participate in donating their bottles to CMHA-ER through SkipTheDepot will receive a yearly tax receipt
- This tax receipt will be emailed to you directly at the end of each fiscal year to the email address attached to your SkipTheDepot account.

### **3. Can you track donations from multiple residential pickups?**

- Yes, you can create a company or group bottle drive. All pickups will be facilitated through SkipTheDepot, meaning every pickup will be tracked and accumulated showing how much your group has raised for the bottle drive.

### **4. Do you need to include the ID numbers on each of the recycled bags to pick up?**

- No, you do not. Although we encourage you to write your ID (which is specified within both the app and website) on your bags as a security measure.

### **5. Is SkipTheDepot open 24 hours a day?**

- Yes. You can book a pickup whenever you want! Our available dates and schedules for your pickup will depend on your area and the frequency of your zone.
- If you are looking to return your bottles immediately, you will still have to go to an actual bottle depot. If you do not want to go to a bottle depot, use SkipTheDepot!

### **6. How long does it take to process the bottle donation?**

- Typically, within 48 hours (about 2 days) from time of pickup

### **7. What if I have multiple locations I need picked up?**

- We have multi-site options available. Please inquire about it through the contact form or email [contact@skipthedepot.com](mailto:contact@skipthedepot.com)

❖ For any other questions that you may have, check out the [SkipTheDepot FAQ Page](#)